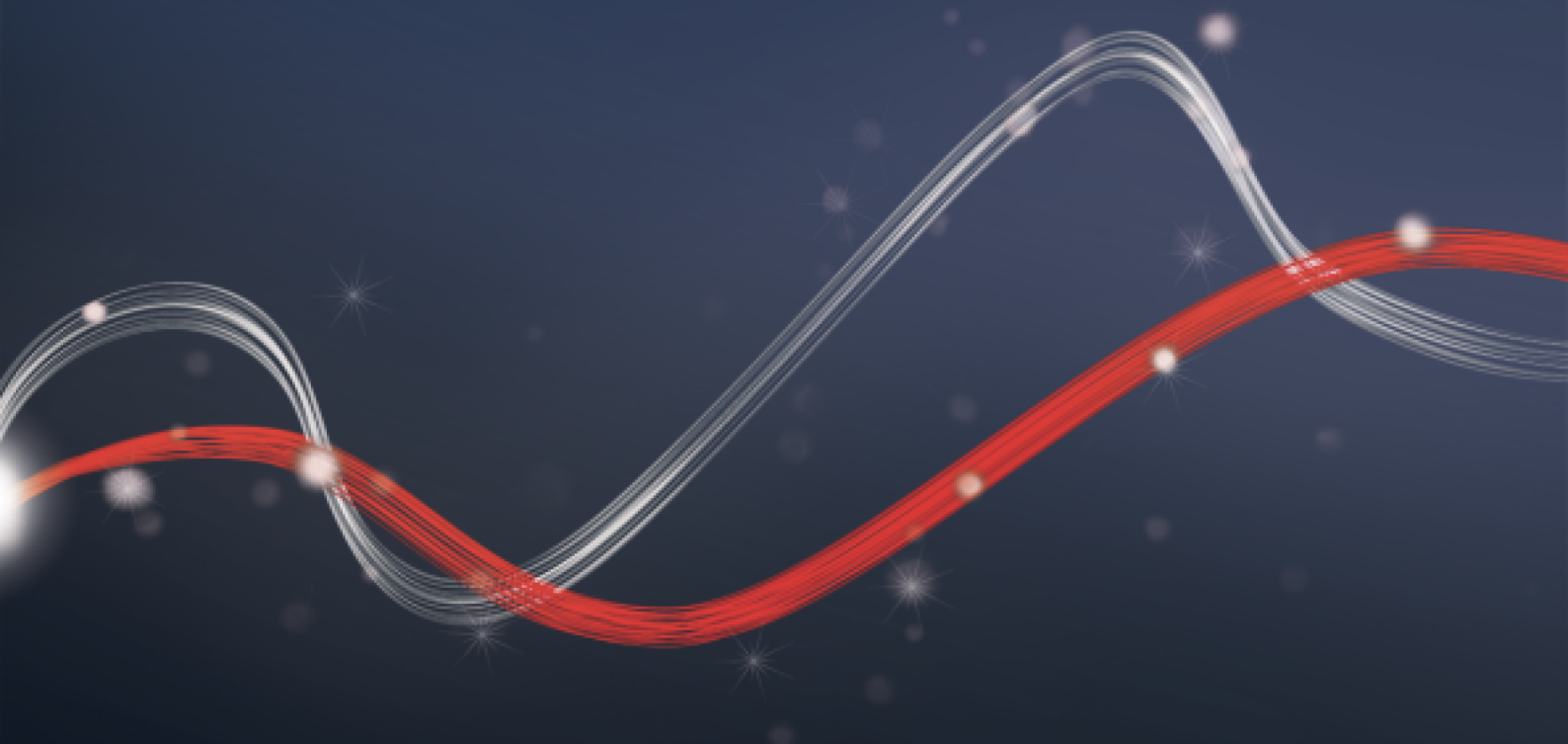




Be ahead



KUSTOS ULTRA BT A

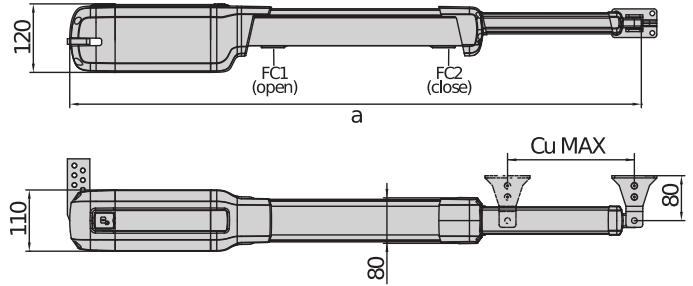




KUSTOS ULTRA BT A



Electromechanical automation systems for swing gates



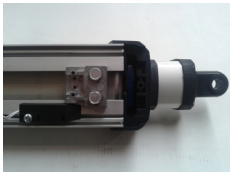
	a	Cu MAX
Kustos BT A25	1090	295
Kustos BT A25 ULTRA	1090	250
Kustos BT A40	1210	355
Kustos BT A40 ULTRA	1210	355

Complete range of electromechanical pistons for residential use, suitable for swing gate leaves up to 4 metres wide and weighing up to 500 kg. Quick and practical installation: the new KUSTOS BT A operators are designed to allow quick and easy installation, thanks to a number of important measures such as the covered worm screw, integrated stops, magnetic limit switches and the magnetic locking pin.

Relevant features



Covered worm screw: all KUSTOS BT A range operators are telescopic operators with completely covered worm screw. This ensures maximum protection against external agents (water, dust, dirt, etc.) as well as a total protection for people, preventing any type of access to the moving parts.



Magnetic limit switch and integrated stops: the magnetic limit switch system ensures maximum precision of movement and quick and easy adjustment. Coupled with integrated adjustable mechanical stops, they allow precise installation without requiring floor stops.



Magnetic pin: an exclusive feature of Bft operators enabling quicker installation steps, making them easier and always ensuring correct rear locking of the operator





Electromechanical automation systems for swing gates

ADVANTAGES

Quick and practical installation: the new KUSTOS BT A operators are designed to allow quick and easy installation, thanks to a number of important measures such as the covered worm screw, integrated stops, magnetic limit switches and the magnetic locking pin.





Electromechanical automation systems for swing gates

KUSTOS ULTRA BT A

Code	Name	Description
P935101 00002	KUSTOS ULTRA BT A25	Irreversible electro-mechanical operator 24 V for swing gates up to 400 kg in weight and up to 2.5 m in length with covered worm screw. Integrated mechanical stops. Covered worm screw Magnetic limit switch
P935102 00002	KUSTOS ULTRA BT A40	Irreversible electro-mechanical operator 24 V for swing gates up to 500 kg in weight and up to 4 m in length with covered worm screw. Integrated mechanical stops. Covered worm screw Magnetic limit switch
R935308 00005	KUSTOS ULTRA BT KIT A25 FRA	Complete kit 24 V for swing gates up to 400 kg in weight and up to 2.5 m in length. Operators with covered worm screw (IP44). Integrated mechanical stops. Covered worm screw Magnetic limit switch
R935311 00005	KUSTOS ULTRA BT KIT A40 FRA	Complete kit 24 V for swing gates up to 500 kg in weight and up to 4 m in length. Operators with covered worm screw (IP44). Integrated mechanical stops. Covered worm screw Magnetic limit switch

THALIA: Control panel with display for one or two 24V electromechanical operators for swing gates

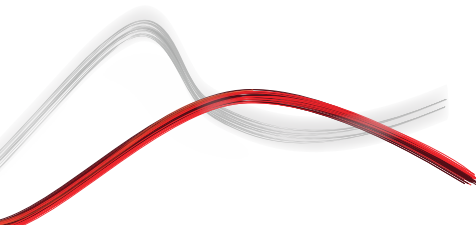


D113745 00002 - THALIA - Recommended



- Application: control panel with display for one or two 24V electromechanical operators for swing gates
- Card power supply: 230 V single-phase
- Operators power supply: 24Vdc 180W max each operator
- Main features: new standard colour removable terminal blocks, simplified scenario-based programming with display and integrated dual-channel receiver, D-Track anti-crushing system, slowdown during opening and closing and electronic self-learning.
- Main functions: automatic re-closing, fast closing, partial opening, deadman feature
- Compatibility: LIBRA C MA, LIBRA, LIBRA R, LIBRA MA R

	KUSTOS ULTRA BT A25	KUSTOS ULTRA BT A40
Control unit	THALIA	THALIA
Board power supply	230 V	230 V
Motor voltage	24 V	24 V
Power consumption	40 W	40 W
Max. width of door/gate wing	2,50 m	4 m
Max. weight of door/gate wing	400 kg	500 kg
Useful rod stroke	250 mm	355 mm
Maximum angle	118 °	126 °
Cycle time	13 s	17 s
Type of limit switch	Magnetic	Magnetic
Slowdown	Yes	Yes
Locking	Mechanical	Mechanical
Release	Personal key	Personal key
Impact reaction	D-Track	D-Track
Frequency of use	intensive	intensive
Protection rating	IP44	IP44
Environmental conditions	-20 ÷ 55 °C	-20 ÷ 55 °C





Electromechanical automation systems for swing gates

RECOMMENDED ACCESSORIES

	D113747 00002 - THALIA P Control panel for one or two 24V electromechanical and hydraulic operators for swing gates with electric lock management, for highly complex systems		N733646 - ARB KUSTOS FRONT Front adjustable fixing brackets for Kustos BT A
	D730178 - PLE Anchor plate for welding the mountings to masonry pillars for LUX, ORO, PHOBOS operators		new N735002 - SFR B Adjustable wall bracket, short, for linear swing-gate motors (excluding P4.5-P7)
	new N735003 - SFR-L B Adjustable wall bracket, long, for linear swing-gate motors (excluding P4.5-P7)		new N735002 00001 - SFR B - COMPLETE Adjustable wall bracket, short, for linear swing-gate motors (excluding P4.5-P7), with flat bracket
	new N735003 00001 - SFR-L B - COMPLETE Adjustable wall bracket, long, for linear swing-gate motors (excluding P4.5-P7), with flat bracket		N999404 - CABLE N BT Control unit connecting cable for PHOBOS BT A, KUSTOS BT A. Coil of 100 m, 3x1,5.
	P125020 - BBT BAT Set of backup batteries for THALIA and THALIA P		new D114093 00003 - RADIUS LED BT A R1 Flashing light with incorporated antenna for motors with power supply 24 V.
	new D114168 00003 - RADIUS LED BT A R1 W Flashing light with built-in antenna for motors with a 24 V power supply. White flashing light.		new D114094 00003 - RADIUS LED BT A R0 Flashing light without incorporated antenna for motors with power supply 24 V.
	new P111782 - COMPACTA A20-180 Pair of photocells adjustable 180 ° horizontally. Range 20m. Power supply 12 – 33Vac / 15 – 35Vdc		





Electromechanical automation systems for swing gates

What is U-Link?

The technology that gives you more power

U-Link, Universal Link, is an exclusive BFT platform that can be used to create high-tech ecosystems. In Home Access Automation, it can be used to communicate with all home access automation devices of any brand. This saves you time and allows you to control everything easily and without any worries.

It is intuitive

Easy to install and to use

It is scalable

You can add as many devices as you want

It is flexible

It allows you to create groups of interconnected products

It is practical

Works with or without an internet connection

It is functional

Its settings can be controlled remotely using dedicated applications



Electromechanical automation systems for swing gates

Everything on one screen: find out more about this amazing technology

A world-exclusive platform that **can be used to create high-tech ecosystems** offering a vast range of solutions for many different sectors.

This proprietary platform which is a key feature of BFT products, thanks to the B-EBA cards and the Clonix U-Link receiver, is suitable for any protocol or product for access automation (including BFT products non-BFT ones and older versions) and it can be used in a variety of different sectors. This means any device becomes a smart device which can be interconnected with other systems, using a language that is becoming universal.



U-Control HOME

U-Control HOME is the application that allows you to open the gate to your home and to remotely control BFT automations using your own smartphone. The iOS version can be used to automatically open the automation when you are close to it.



U-Base 2

A software package for installation, performing maintenance and identifying any faults in the U-Link compatible operators, easily and conveniently.



U-SDK

U-SDK is the application which allows BFT automations to be made compatible and easily integrated with a BMS network.



Clonix U-Link

Connect non-native U-Link and non-BFT products to U-Link systems.

Is it possible to connect non-native U-Link BFT operators or other brands of products to U-Link? Yes, thanks to the Clonix receivers. Accessories which accept no limits.



B-EBA

A direct link to your operators.

The B-EBA expansion cards make it possible to connect external devices such as PCs, smartphones and tablets to a BFT operator and a Clonix receiver or to connect multiple BFT products in a U-Link network. These accessories integrate with U-Link technology and with Bluetooth, Wifi, Z-Wave and TCP/IP protocols as well as with the RS485 serial interface. A device that demonstrates exactly what BFT means by interconnectivity.

