



Be ahead

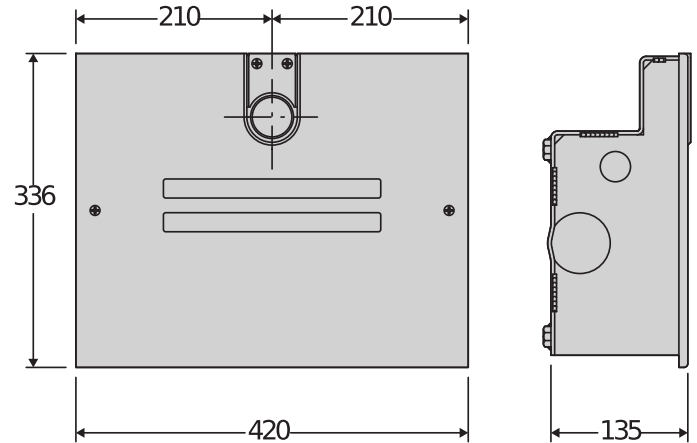


ELI BT A





Electromechanical automation systems for swing gates



A complete range of in-ground non-reversible electromechanical operators for swing gates weighing up to 500 Kg and up to 4m long with 24V technology. The integrated mechanical stops for both opening and closing, allowing the option of a simple installation by reducing the need for physical stops. The encoder-based limit switch system offers precision and quick installation.

Relevant features



Fast



Encoder

Super fast BT35 motors: Maximum comfort. Fast opening is ideal for sites which require reduced waiting times meaning you can quickly clear busy or hazardous roads. Fast closing can help to improve security keeping the property safer from intruders.

BT motors with relative encoder: No more need to assemble and adjust the limit switches, reducing installation time.



New secondary arm: quicker and more secure attachment to the primary shaft, for a more reliable installation!





Electromechanical automation systems for swing gates

Relevant features



New composite crown XECARB (BT A 40): developed with carbon fiber reinforced polymers, widely used also in sports and air-space, it allows the use on heavier gates and longer life.



Integrated mechanical stops: for both opening and closing, allowing the option of a simple installation by reducing the need for physical stops.





Electromechanical automation systems for swing gates

ELI BT A

Code	Name		Description
P930133 00002	ELI BT A35 VELOCE		24 V electromechanical in-ground operator for swing gates weighing up to 200 kg and up to 3.5 m long. Relative encoder limit switches.
P930134 00002	ELI BT A40		24 V electromechanical in-ground operator for swing gates weighing up to 500 kg and up to 4 m long. Relative encoder limit switches.

THALIA: Control panel with display for one or two 24V electromechanical operators for swing gates



D113745 00002 - THALIA - Recommended



- Application: control panel with display for one or two 24V electromechanical operators for swing gates
- Card power supply: 230 V single-phase
- Operators power supply: 24Vdc 180W max each operator
- Main features: new standard colour removable terminal blocks, simplified scenario-based programming with display and integrated dual-channel receiver, D-Track anti-crushing system, slowdown during opening and closing and electronic self-learning.
- Main functions: automatic re-closing, fast closing, partial opening, deadman feature
- Compatibility: LIBRA C MA, LIBRA, LIBRA R, LIBRA MA R

	ELI BT A35 VELOCE	ELI BT A40
Motor voltage	24 V	24 V
Compatible control unit	THALIA, THALIA P	THALIA, THALIA P
Max. weight of door/gate wing	200 kg	500 kg
Max. width of door/gate wing	3,50 m	4 m
Max. length gate panel without electric lock	2 m	2,50 m
Max. motor torque	250 Nm	350 Nm
Max. opening cycles per hour	50	Continuous
Maximum angle	120 °	120 °
Speed	2 Rpm	1,10 Rpm
Opening time to 90°	10" (with slowdown)	14" (with slowdown)
Limit switch standard	Relative encoder	Relative encoder
Limit switch optional	Magnetic	Magnetic
Mechanical stops	OP+CL	OP+CL
Release	Lever or lever with personalised key	Lever or lever with personalised key
Impact reaction	Electronic clutch (with control panel)	Electronic clutch (with control panel)
Protection rating	IP67	IP67
Environmental conditions	-20 ÷ 55 °C	-20 ÷ 55 °C

RECOMMENDED ACCESSORIES










	N733397 - BTCF 120 E Foundation box with levers for ELI AC A, ELI BT A. Release not supplied		N733398 - BTCF 120 E INOX Stainless steel foundation box with levers for ELI AC A, ELI BT A. Release not provided
--	--	--	---





Electromechanical automation systems for swing gates

RECOMMENDED ACCESSORIES

	N733392 - SCC Release for ELI AC A, ELI BT A and SUB BT with lever key.		N733502 - SCP Release for ELI AC A, ELI BT A and SUB BT with personalized key.
	N733304 - E180 Accessory for opening to 180° for ELI AC A, ELI BT A operator		new N733951 - FCEBT Magnetic limit switches for BT and AC models.
	new P111782 - COMPACTA A20-180 Pair of photocells adjustable 180° horizontally. Range 20m. Power supply 12 – 33Vac / 15 – 35Vdc		new R400009 - KIT COMPACTA - PHP Kit complete with a pair of aluminum posts for photocells height 522mm and a pair of Compacta A20-180 photocells adjustable 180° horizontally, range 20m, power supply 12 – 33Vac / 15 – 35Vdc
	new D114094 00003 - RADIUS LED BT A R0 Flashing light without incorporated antenna for motors with power supply 24 V.		new D114168 00003 - RADIUS LED BT A R1 W Flashing light with built-in antenna for motors with a 24 V power supply. White flashing light.
	new D114093 00003 - RADIUS LED BT A R1 Flashing light with incorporated antenna for motors with power supply 24 V.		





Electromechanical automation systems for swing gates

What is U-Link?

The technology that gives you more power

U-Link, Universal Link, is an exclusive BFT platform that can be used to create high-tech ecosystems. In Home Access Automation, it can be used to communicate with all home access automation devices of any brand. This saves you time and allows you to control everything easily and without any worries.

It is intuitive

Easy to install and to use

It is scalable

You can add as many devices as you want

It is flexible

It allows you to create groups of interconnected products

It is practical

Works with or without an internet connection

It is functional

Its settings can be controlled remotely using dedicated applications



Electromechanical automation systems for swing gates

Everything on one screen: find out more about this amazing technology

A world-exclusive platform that **can be used to create high-tech ecosystems** offering a vast range of solutions for many different sectors.

This proprietary platform which is a key feature of BFT products, thanks to the B-EBA cards and the Clonix U-Link receiver, is suitable for any protocol or product for access automation (including BFT products non-BFT ones and older versions) and it can be used in a variety of different sectors. This means any device becomes a smart device which can be interconnected with other systems, using a language that is becoming universal.



U-Control HOME

U-Control HOME is the application that allows you to open the gate to your home and to remotely control BFT automations using your own smartphone. The iOS version can be used to automatically open the automation when you are close to it.



U-Base 2

A software package for installation, performing maintenance and identifying any faults in the U-Link compatible operators, easily and conveniently.



U-SDK

U-SDK is the application which allows BFT automations to be made compatible and easily integrated with a BMS network.



Clonix U-Link

Connect non-native U-Link and non-BFT products to U-Link systems.

Is it possible to connect non-native U-Link BFT operators or other brands of products to U-Link? Yes, thanks to the Clonix receivers. Accessories which accept no limits.



B-EBA

A direct link to your operators.

The B-EBA expansion cards make it possible to connect external devices such as PCs, smartphones and tablets to a BFT operator and a Clonix receiver or to connect multiple BFT products in a U-Link network. These accessories integrate with U-Link technology and with Bluetooth, Wifi, Z-Wave and TCP/IP protocols as well as with the RS485 serial interface. A device that demonstrates exactly what BFT means by interconnectivity.

